

# WELDCO **advis**or

## FORESTRY

NEW GROWTH

### In this Issue:

#### Feature Story

- Forestry - Cut To Length Logging

#### Weldco Heavy Industries

- Getting a Handle on It

#### Weldco Hydra-Lift

- Dealer Profile - Camex



WELDCO • 0 2 0 2 2 0 1 0



CUT TO LENGTH PROCESSED WOOD AT LANDING

All operations are aggressively ramping up and growth in the foreseeable future looks very promising. With momentum on our side, we pulled together a full cross section of people from all Weldco Companies to direct our collective focus on the future on Weldco.

As a group, we outlined our plans to move the company forward. Key to the event's success was the collective participation and input into the new direction that Weldco will be taking. Quite simply, we want to be widely recognized by the industry and especially by our customers to be in a league apart, and our reputation for unparalleled innovative and ingenious solutions will have only one equal: Our ability to deeply understand our customer's needs.

I'm confident new strategic initiatives that we have designed to make this vision a reality will also make our team much more resilient to the inevitable market fluctuations. Over the course of 2012, the positive effects of the changes we are making will impact our most important stakeholders- our customers.

Have a Safe Day,

Doug Schindel  
President, Weldco Companies

## YMCA 2012 Strong Kids Campaign



This year's 2012 Strong Kids and Welcome Village Campaign Launch was a huge success. Two amazing stories were told to nearly 600 YMCA friends and supporters. Weldco was the proud lead sponsor of the luncheon. The following quote from Weldco's President and current Chair of the board for YMCA Edmonton, Doug Schindel, was shared with all the guests in attendance:

"We've all heard the phrase "give till it hurts", I however promote the philosophy of giving until it feels good. The personal satisfaction gained from assisting those who truly need a helping hand, reinforces the true spirit of philanthropy."

## Ground Water Expo



Weldco-Beales Mfg. participated in the National Ground Water Association's 2011 Expo and Annual Meeting that took place November 29 - December 2 in Las Vegas, Nevada. The event posted strong numbers, both in attendance and number of exhibitors. In fact, the number of exhibiting companies — 325 — set an all-time record.

According to NGWA Executive Director Kevin McCray, the strong attendance "speaks well to optimism about the future of the groundwater industry."

Weldco's Bob Stuben, Steve Ellingson and Peter Baumann displayed our 615 casing hammer at the show. Their efforts help generate sales leads in both the domestic and international markets.

## Crane & Rigging Conference



Doug Schindel was a guest presenter at the 2011 Crane & Rigging Conference held in Edmonton, Alberta. Doug shared the pros and cons of manufacturing in Canada. He focused on the challenges a Canadian crane manufacturer faces to remain competitive in North America, and outlined the strategies taken by Weldco over the past few years, covering implementation plans, common pitfalls, and the advantages gained.

## In This Issue

- 3 President's Message
- 3 Industry Updates  
YMCA 2012 Strong Kids Campaign, Ground Water Expo and Crane & Rigging Conference
- 4 Weldco Hydra-lift  
Dealer Profile: Camex Equipment, Weldco Hydra-Lift Abroad
- 6 Cover Story  
Forestry - Cut To Length Logging
- 8 Weldco -Beales Manufacturing  
WBM Backfill Packer and Good Manipulation
- 9 Weldco Heavy Industries  
Getting a Handle on It!
- 10 In Memory  
Weldco Companies remembers Ken Mueller
- 11 Contact Info

## 6 Cover Story: Forestry New Growth



'Cut To Length Logging'  
Read more on page 6.

The Weldco Advisor is a free publication, produced by Weldco Companies.  
For questions, comments, concerns or additional copies of this newsletter, please contact Weldco Corporate Communications by calling toll free 1-866-WELDCO-1 or by emailing cc@weldco-beales.com  
All contents copyright © 2012 by Weldco Companies. All rights reserved. Any use of the contents in this publication without the express written permission of the publisher is strictly prohibited. Please contact us for permission. Printed in Canada.

# Dealer Profile

Camex Equipment

By Tom Jorgensen



Located in Nisku, Alberta, Camex Equipment supplies Western Canada and the international market with quality new, used and consigned equipment. Stocking one of the most extensive lines of oilfield and construction equipment available in Western Canada, Camex is an authorized dealer of Weldco Hydra-Lift cranes.

Camex Equipment installs and rigs-up new Hydra-Lift cranes with both standard and customized configurations that meet their customer's requirements. The partnership between Weldco and Camex stretches back many years, and their commitment and dedication to promote and sell our product line is appreciated.

## Playing in a Bigger Sandbox - Weldco Hydra-Lift Abroad

By Doug Hall



Weldco Hydra-Lift was recently contacted by a customer working in Papua, New Guinea who runs a Hydra-Lift HL30TC70 in the region's oil field. Their crane required a new turret, and after a quick call into our Parts and Service department, we got the piece manufactured and shipped off to them.

Weldco Hydra-Lift cranes reputation for robustness has earned business in other remote areas. Over the years several cranes have been shipped to Yemen. The main crane frames are modified to be mounted on specialized Kenworth trucks configured to work in the desert.

# Forestry

## Cut To Length Logging

By Nick Cindrich



In recent years, forestry industry demand for cut to length logs has surpassed that of tree length product. Cut to length logs require less material handling at the saw mill, giving them a significant advantage.

Cut to length harvesting in British Columbia follows this basic process: A Feller-Buncher is used to fell the trees, which are then moved to the roadside, with limbs attached, by Grapple Skidders. At the roadside landing, Log Processors will de-limb, top and cut the tree length logs to a specific length. The cut to length logs are then decked, or stacked, awaiting shipment. Forestry Excavators, fitted with power clam grapples, are used to load the product onto logging trucks for transport to the saw mill. Large Wheel Loaders, equipped with high capacity short-wood grapples are used for off-loading the logs at the saw mill. Short-wood grapple equipped Wheeled Excavators then high-deck the product for stockpiling prior to processing in the mill. Short-wood grapple equipped Wheel loaders are used to feed the saw mill with logs.

Short-wood power clams for loading trucks and short-wood grapples for high decking logs are a small part of the Weldco-Beales suite of forestry products for excavators. Wheel Loader forestry attachments include short-wood grapples for unloading trucks and feeding the saw mill, as well as fork racks and other material handling attachments.



**For further information:**  
<http://www.borealforest.org/world/innova/harvesting.htm>  
<http://www.for.gov.bc.ca/hfd/pubs/docs/sil/Sil468-3b.pdf>  
[http://flash.lakeheadu.ca/~replkki/ctl\\_ft.html](http://flash.lakeheadu.ca/~replkki/ctl_ft.html)

### Good Manipulation

By Don Fisher



Weldco-Beales entry into the worldwide Tire Manipulator market has taken a positive step forward with the successful delivery of its first T35P-S to a customer based out of Cheyenne, Wyoming. The unit is a 35,000lbs (15,875kg) class manipulator mounted onto a new Hyster 650HD forklift truck.

The T35P-S is designed to handle the 400 ton ultra-class haul trucks using radial 59/80R 63 tires/rims that can weigh up to 20,000lbs as well as the much heavier 53.5/85R57 bias wheel loader tires that can weigh up to 32,000lbs when coupled with rims and chains.

The new design includes innovative safety features; including hydraulic operated tire fall arrest arms that lock out the rotation tire pads when engaged, load holding valves, and safety switches built into the controls. High intensity LED lights mounted inside of the manipulator's main body allows for excellent visibility 24 hours a day.

Market demand for a Weldco Tire Manipulator solution is resulting in additional orders for T35's as well as the next model coming on stream- a T20P-S. It offers a 20,000lb (11,339kg) capacity designed for the 240 ton class haul trucks and the wheel loaders that load them.

### Packing Up!

By: Frank Buonpensiero

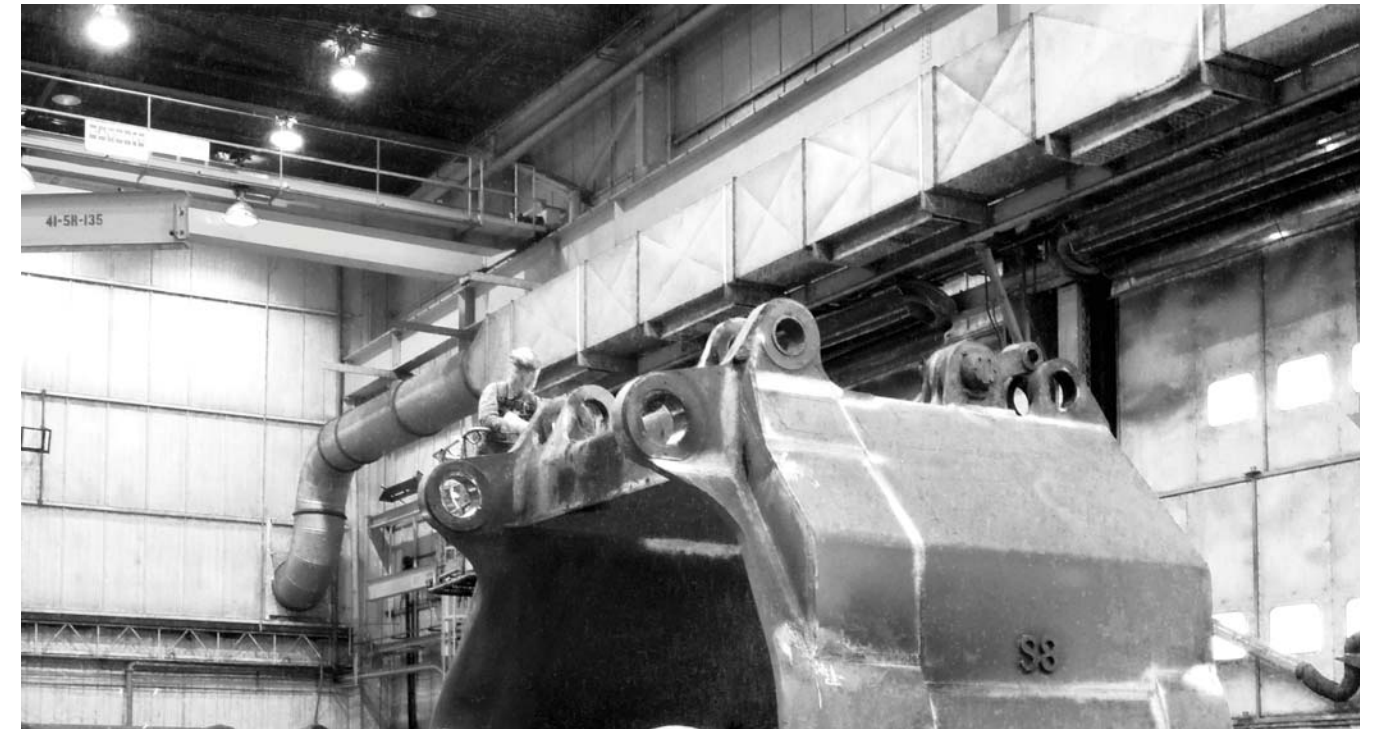
The Backfill Packer is used when an underground mine tunnel is being closed off and packed full of material. Underground machines with dozer style blades pack as much material as they possible into the tunnel and then the WBM Backfill Packer is used to push material into tight spaces and other areas where the dozer blade can't reach.



WBM Backfill Packer built for Sandvik Mining.

### Getting a Handle on It!

By Jim Goodwin



Electric rope shovels are the workhorses of the Oil Sands. Their components are largely weather-resistant, and their 100-ton buckets can fill a haul truck in just three passes. Despite their simplicity, key components do eventually wear out and break, and that is where Weldco Heavy Industries steps in.

Pictured below is a job WHI undertook last fall on a dipper handle taken off a 495 shovel. This complex repair was considered "un-repairable" by most. The component is 40 feet long and weighs approximately 24 ton. The repair was undertaken by a team of skilled welders under the direction of WHI's Doug Kalinowski.



Dipper handle as received



Dipper handle after repair



Ken Mueller

Weldco lost a good friend, a very prominent and well respected member of our industry and a mentor to many of us with the passing of Ken Mueller. Ken passed away on January 29, 2011.

Ken Mueller joined Weldco in the engineering department during the mid-1950's. He held numerous management positions during his years with us and

was part of the ownership group for a period of time beginning in 1979 and into the late 1980's. He was a cornerstone of this organization in the early years and we would not be the company we are today without his vision, his commitment and his tireless energy. For those of us that had the privilege of working with "KSM", there are humorous stories and even more fond memories relating to Ken from the days he worked at Weldco.

## A Look Back *Weldco*



The new, modern, splendidly equipped welding and manufacturing plant of WELDCO COMPANY, at 116 East Second Ave., Vancouver. On display is one of the portable welding units.

*Specialists in Aluminum, Die Cast and Cast Iron Welding*

Operating on a 24-hour-a-day basis, the Weldco Company plant is saving valuable time and money for firms threatened with shutdowns due to broken parts.

Our craftsmen have the training and equipment necessary to turn out the most intricate work in record time. We can weld anything from a fender to a five-ton casting!

Remember... do not trust your precision machinery to partially trained wartime help. Call Weldco for real workmanship!

Weldco Company also manufactures power units, bulldozer and donkey engine parts. Call Gordon Reelle or Mad Taylor for personal service—anytime, day or night.

Our Estimate does not Obligate You

**WELDING REPAIRS**

We can give immediate service on any of the following types of repair work:  
Ammonia, Gas, Oil and Steam Pipes.  
Tractor Repairs.  
Stainless Steel.  
Cast Iron.  
Cylinders and Cylinder Heads.  
Aluminum.  
Die Casting.



116 EAST SECOND AVE. — VANCOUVER, B.C. — PHONES: FAIRMONT 5460 — FAIRMONT 7166  
NIGHT CALLS — Gordon Reelle, HASTINGS 2345M; Mad Taylor, HASTINGS 5871R

Above: Specification Sheet - Cover of one of the Weldco double spec. sheet advertisement, dated 1948 - 1949.



## WBM Edmonton

12155 - 154 Street, Edmonton AB, T5V 1J3

**Toll Free:**

General Inquiries: 1-800-661-4155  
Sales Direct: 1-866-205-7158  
Parts Direct: 1-866-205-7159

**Local:**

General Inquiries: (780) 454-5244  
Sales Direct: (780) 453-5333  
Parts Direct: (780) 453-5329  
Fax: (780) 455-6770

## WBM Langley

5770 Production Way, Langley BC, V3A 4N4

**Toll Free:**

General Inquiries: 1-800-665-0511  
Parts Direct: 1-866-533-8938

**Local:**

General Inquiries: (604) 533-8933  
Sales Direct: (604) 533-8933  
Parts Direct: (604) 533-8938  
Fax: (780) 455-6770

## WBM Barrie

515 Welham Road, Barrie ON, L4N 8Z6

**Toll Free:**

General Inquiries: 1-877-320-4286

**Local:**

General Inquiries: (705) 733-2668  
Parts Direct: (705) 733-2668 ext. 110

## WBM Tacoma

11106 25th Ave E, Suite B, Tacoma WA 98445

**Toll Free:**

General Inquiries: 1-800-547-6357

**Local:**

General Inquiries: (253) 383-0180  
Fax: (253) 383-8061



## Weldco Hydra-Lift

12155 - 154 Street, Edmonton AB, T5V 1J3

**Toll Free:**

General Inquiries: 1-866-WELDCO-1

**Local:**

General Inquiries: (780) 454-5244  
Fax: (780) 455-6770



## Weldco Heavy Industries

Lot 17, Caribou Energy Park, Fort MacKay AB, T0P 1C0

**Toll Free:**

General Inquiries: 1-866-WELDCO-1

**Local:**

Fax: (780) 455-6770

[www.weldco-beales.com](http://www.weldco-beales.com)

[www.weldco-hydralift.com](http://www.weldco-hydralift.com)

[www.weldcoheavyindustries.com](http://www.weldcoheavyindustries.com)





# WELDCO

COMPANIES

*"We will conduct our business on the principle that our work is never so urgent or important that we cannot take time to do it safely."*

*Doug Schindel, President*